

Dios Exploration Inc. (DOS-V)

To be active in the Elmer area with its K2 project, James Bay-Eeyou Istchee, Québec

Event: Dios Exploration Inc. reported a project update in regards to its K2 property in James Bay - Eeyou Istchee, Québec. New geophysics results to be generated.

Impact: Slightly positive. A planned IP geophysical survey could potentially generate targets in the western extensions of the K2 property. May help vector the summer plans to follow-up with field investigation including drilling.

Analysis

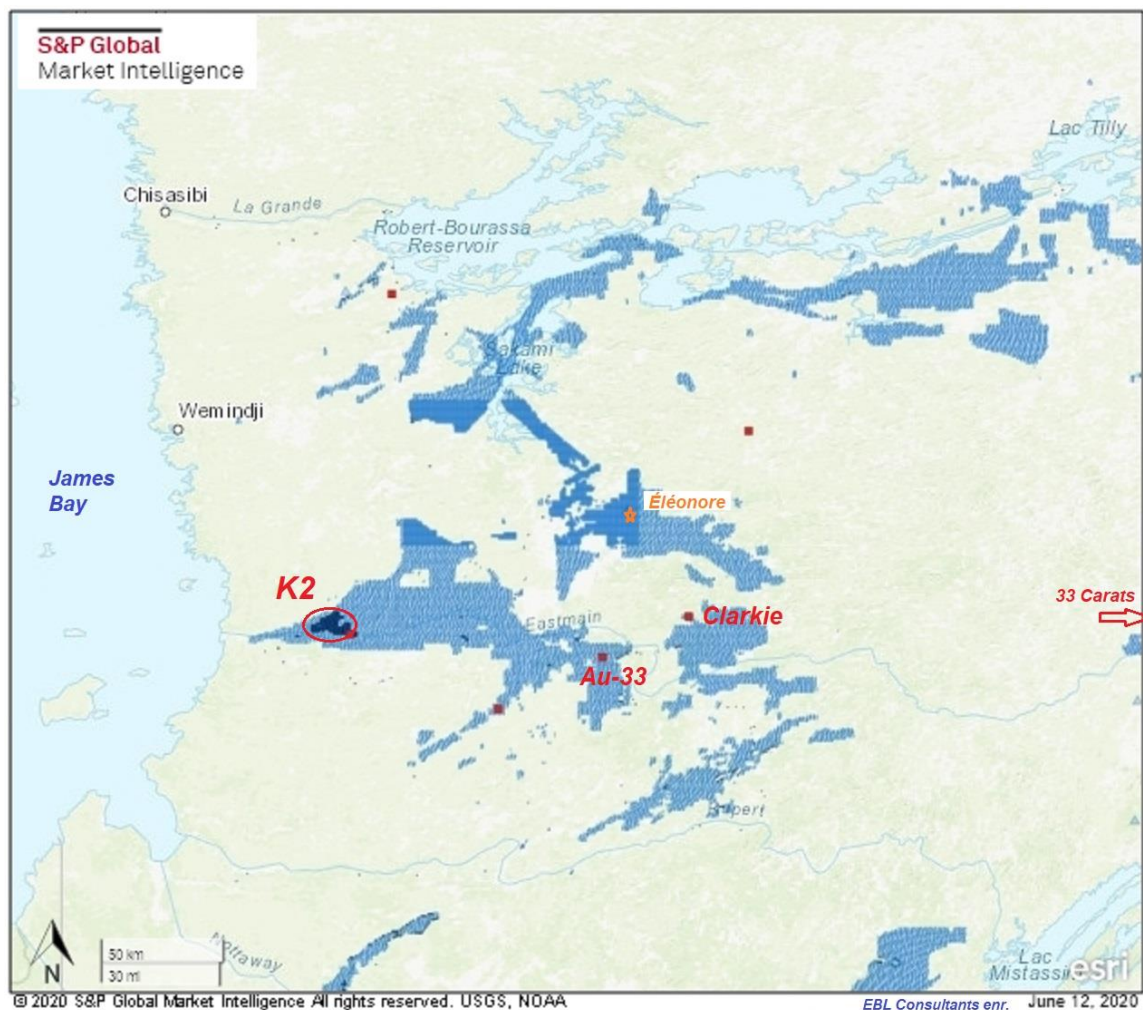
- **On June 11, 2020, Dios announced a project update on its 100% owned K2 property in the Elmer Lake area James Bay - Eeyou Istchee, Québec.** The K2 property is ~15 km to SW on strike of Azimut's (AZM-V) Elmer (Patwon) gold discovery (please see: <https://www.linkedin.com/pulse/azimut-exploration-inc-azm-v-set-commence-new-drilling-eric-lemieux/> and <https://www.linkedin.com/pulse/azimut-exploration-inc-azm-v-elmer-gold-project-patwon-eric-lemieux/>). Azimut is currently drilling its Patwon discovery and likely has completed > 15 holes. The K2 gold project is composed of ~68 claims totaling 3,590ha along the Opinaca River (Lower Eastmain) and centered on felsic volcanics that are spatially associated with the NW-oriented Kali fault at the margins quartz porphyry (QP) with a distinct magnetic anomaly. Mineralization is composed of disseminated and stringer sulphides (pyrite-chalcopyrite, and minor amounts of sphalerite-pyrrhotite) associated with a strong silica-chlorite-carbonate-ankerite alteration. Dios has generated significant results on K2 project with its Attila-Kali eastern targets as well as the emerging WI Target, west of the Kali intrusive.
- **Dios undertaking explorations programs:** Dios is commencing a 3.2km x up to 1.1km line cutting grid (200m-line spaced) and a time-domain dipole-dipole IP (induced polarization) survey to better ascertain the WI Target. The survey shall allow a more precise targeting of the WI Target for a potential upcoming late summer-fall drilling program on K2. The WI Target is a non-outcropping 3.6km x 150-300m large airborne apparent IP anomaly coupled with WSW (N255) airborne Input-Em (electromagnetic) conductor within the felsic volcanics at the western margin of the Kali pluton. Previous work by Dios had yielded up to 6.72 g/t Au, 0.2% Cu, 29 g/t Ag in sericitic dacite boulders. B horizon soil sampling on adjacent ENE drumlins graded up to 10 to 283 ppb Au. Tonalitic outcrops, ~200 m SE of WI Target yielded up to 10g/t Au in a

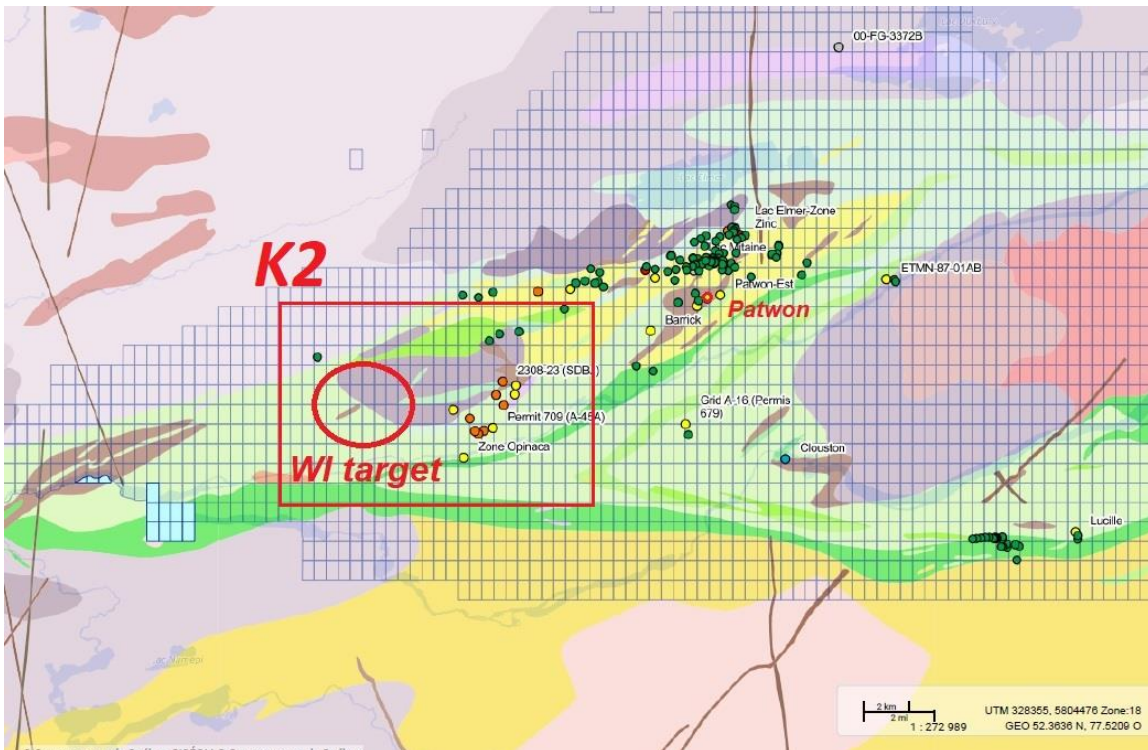
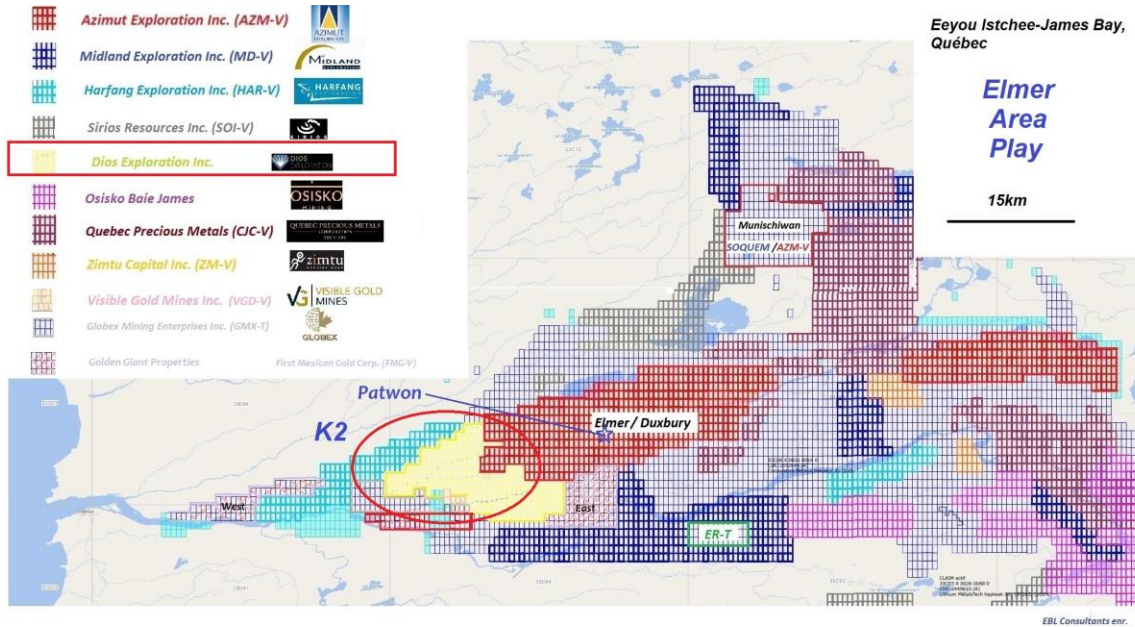


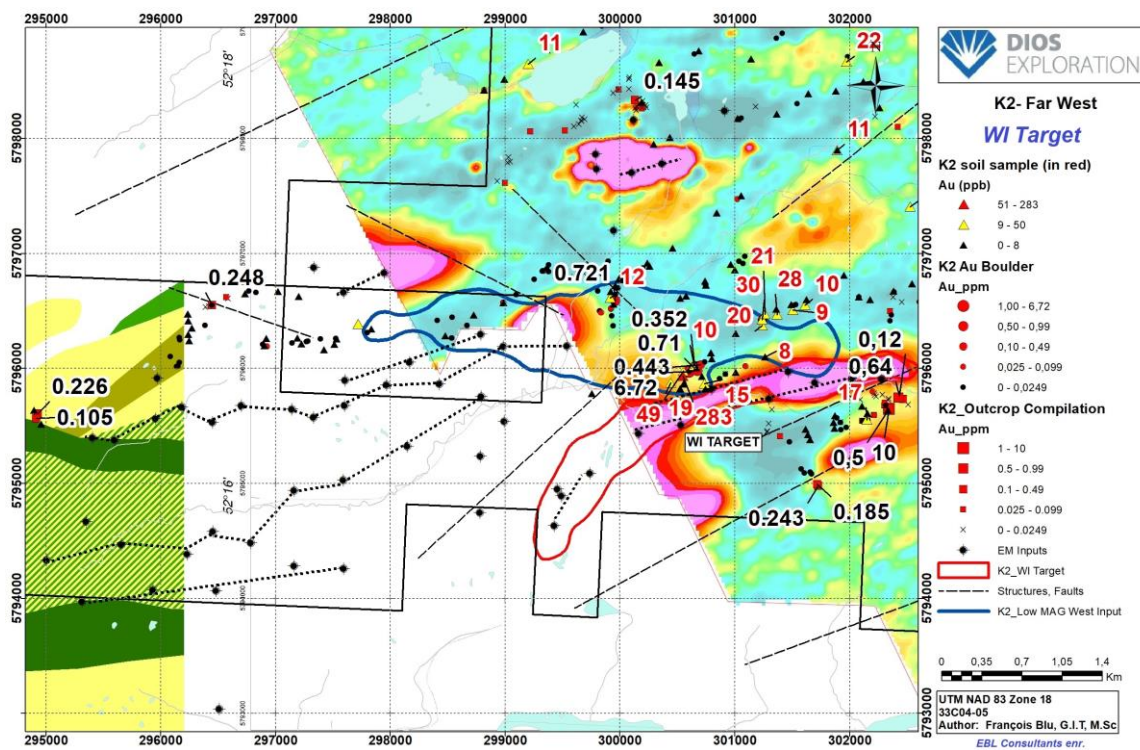
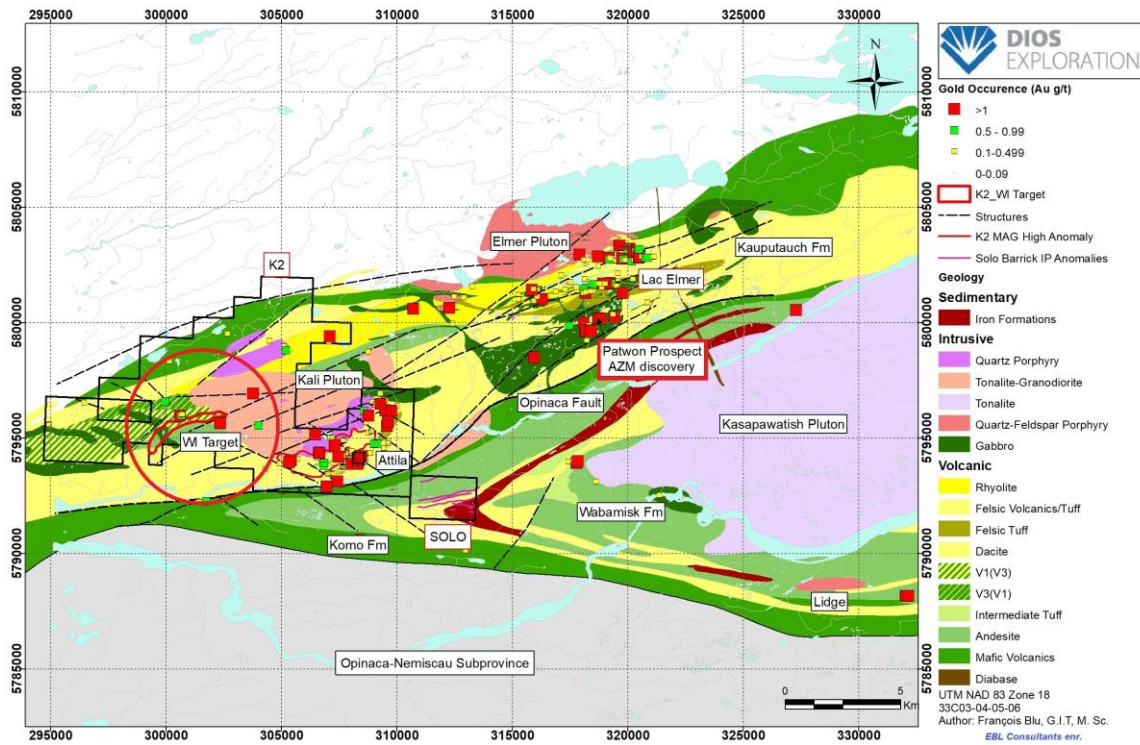
narrow N255 shear structure. The potential of the underexplored western intrusion-volcanic contact appears as a prime target. Dios has received the necessary approvals from the Cree Nation government to proceed with exploration work.

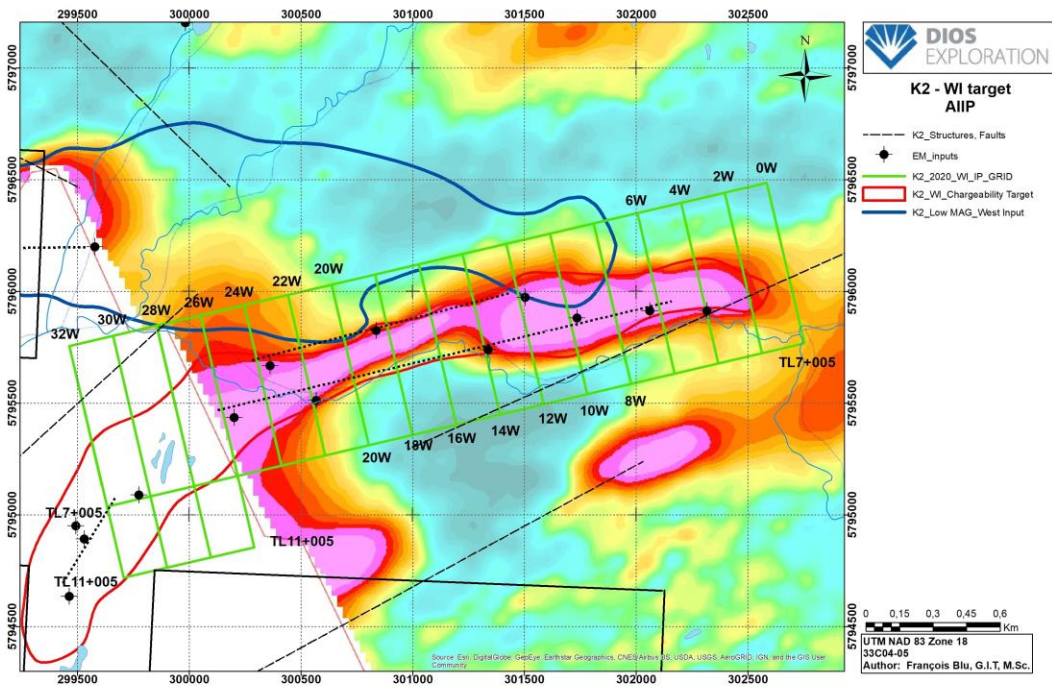
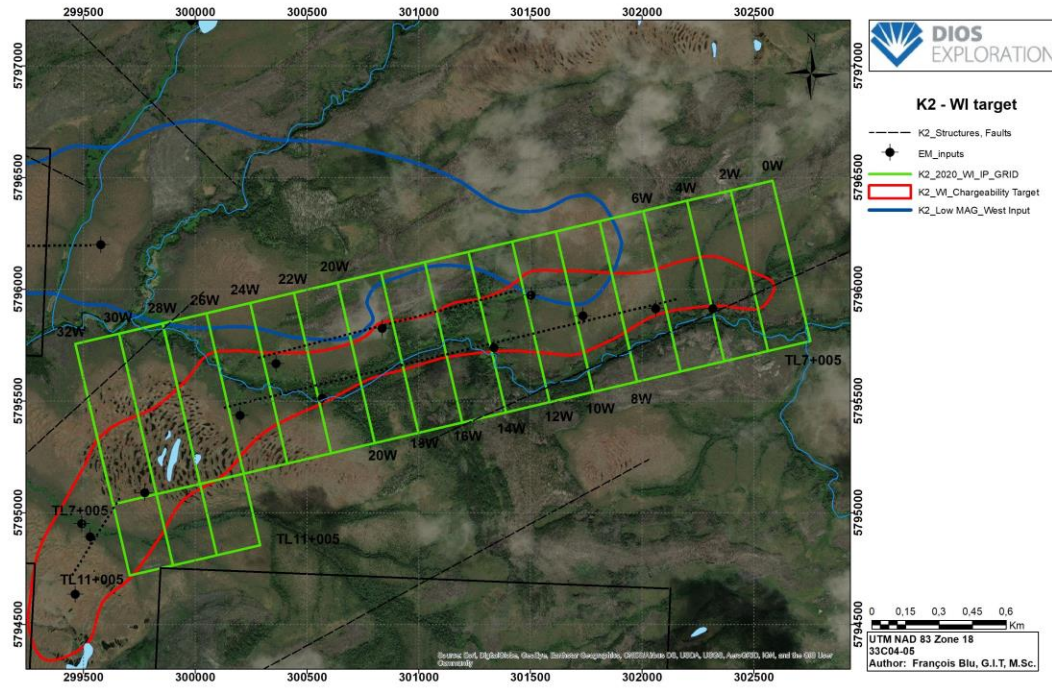
- **Dios focus on gold exploration in James Bay Eeyou Istchee, Québec:** Dios has developed expertise in the search for gold and diamonds in glacial lands since its spin-off from Sirius Resources Inc (SOI-V) in 2001. It has applied expertise, through proprietary till sampling, to systematically assess glacial sediments and possesses ~624 claims along major geological contact in James Bay. DIOS's current properties are: K2, AU 33, Clarkie, 33 Carats and 14K largely located in the geological subprovince of La Grande, near contact with that of Opinaca. Dios recently completed in April 2020 a flow-through share financing of ~\$1M.

Please see: <https://www.linkedin.com/pulse/dios-exploration-inc-dos-v-active-elmer-area-its-k2-project-lemieux/>











Burned NE drumlins with glacial floats adjacent to non-outcropping Wi-Target anomaly (to the right).



Broken altered dacitic float (with 1-10% pyrite) grading 6.72g/t Au, 29g/t Ag, 0.2%Cu.

Important Disclosures

Company	Ticker	Disclosures*
Dios Exploration Inc.	DOS-V	R

* Legend

- A The Mining Analyst, in his own account or in a family related account, owns securities in excess of 1,000 shares of the issued and outstanding equity securities of this issuer.
- B The Mining Analyst, in his own account or in a family related account, owns securities in excess of 10,000 shares of the issued and outstanding equity securities of this issuer.
- C The Mining Analyst, in his own account or in a family related account, owns securities in excess of 30,000 shares of the issued and outstanding equity securities of this issuer.
- D The Mining Analyst, in his own account or in a family related account, owns securities in excess of 50,000 shares of the issued and outstanding equity securities of this issuer.
- E The Mining Analyst, in his own account or in a family related account, owns securities in excess of 100,000 shares of the issued and outstanding equity securities of this issuer.
- F The Mining Analyst, in his own account or in a family related account, owns securities in excess of 250,000 shares of the issued and outstanding equity securities of this issuer.
- V The Mining Analyst has visited material operations of this issuer.
- P This issuer paid a portion of the travel-related expenses incurred by the Mining Analyst to visit material operations of this issuer.
- Q This issuer has directly paid the Mining Analyst.
- R This issuer has indirectly paid the Mining Analyst.

Mining Analyst Certification

I, Éric Lemieux, Mining Analyst, hereby certify that the comments and opinions expressed in this report accurately reflect my personal views about the subject and the issuer.

I determine and have final say over which companies are included in my research and do not have direct or indirect remuneration unless disclosed.

This report has been prepared for general information purposes only and should not be considered either a solicitation for the purchase or an offer of securities. This research note does not constitute a recommendation.

The securities mentioned in this report may not be suitable for all types of investors. The information contained in this report is not intended as individual investment advice and is not designed to meet any particular investment objectives, financial situations, or needs. Nothing in this report constitutes legal, accounting or tax advice.